



Välinge

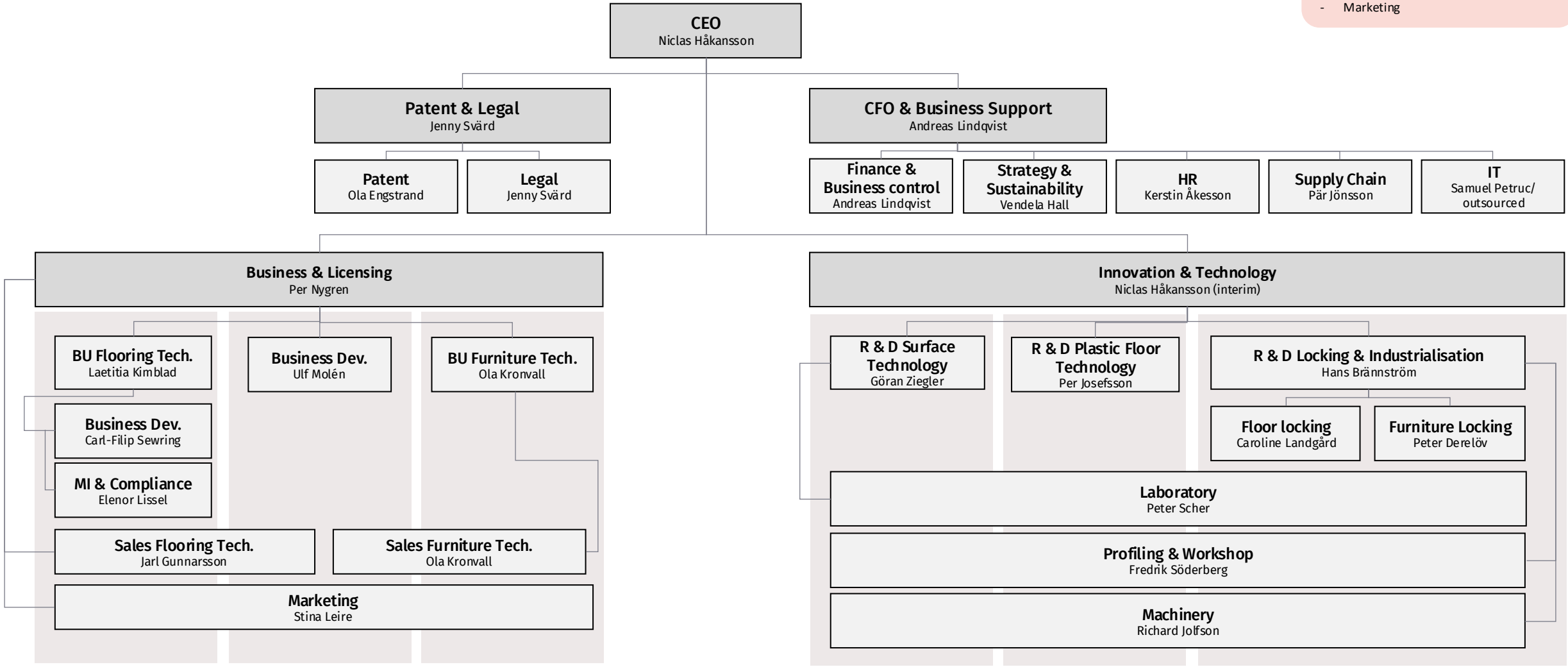
**Organizational Chart
Välinge Innovation AB**



Välinge Group

Service Level Agreements (SLA) from Bjelin on the following areas:

- IT
- Facility management/maintenance
- Marketing



Management Team



Nidas Håkansson
CEO
Chief Executive Officer



Per Nygren
CCO and Deputy CEO
Chief Commercial Officer



Andreas Lindqvist
CFO
Chief Financial Officer



Jenny Svärd
CLO
Chief Legal Officer



Laetitia Kimblad
Director BU Flooring
Technology



Legal & Patent



Jenny Svärd
CLO

Legal



Mirja Ekdahl
Senior Legal Counsel



Fredrik Ahlsten
Senior Legal Counsel



**Hanna Wickholm
Peters**
Legal Counsel



Viktoria Jeppsson
Legal Counsel

Patent



Ola Engstrand
Director IP,
European Patent Attorney



Johan Engquist
Senior Patent Counsel,
European Patent Attorney



Nastasia Andersson
Patent Counsel



Susanna Olsson
Patent Counsel



Melinda Adawi
Patent Paralegal



Karin Hilbertsson
Senior IP Paralegal



CFO and Business Support



Andreas Lindqvist
CFO

Finance & Business Control

Strategic Planning & Sustainability

HR & Internal Service

Supply Chain & Logistics

IT

SLA-service
from Bjelin



Håkan Svahn
Manager Group
Accounting



Sofia Djärv
Manager Business
Control



Vendela Hall
Director Strategic
Planning &
Sustainability



Kerstin Åkesson
HR Director



Pär Jönsson
Supply Chain Director



Samuel Petruc
IT Director



**Linda Svensson
Myskowski**
Senior Accountant



Simon Ståål
Controller Licensing



Niklas Nihlén
IT-Support



Välinge

HR & Internal Services



Kerstin Åkesson
HR Director



Marko Grbavac
Manager Internal Service



Anette Jönsson
Team Leader
Internal Service



Adina Kovacs
Internal Service



Supply Chain & Logistics



Pär Jönsson
Supply Chain Director

Supply & order



Johan Lindén
Supply Chain and ERP Officer



Katia Luxin Kopecny
Customer Support Officer



Mikael Jönsson
Warehouse and Logistics
Operator



Jalal Masari
Warehouse Operator



Martin Ibsonius
Warehouse Operator

Logistics



Business & Licensing



Per Nygren
CCO



Jarl Gunnarsson
Sales Director
Flooring Technology



Laetitia Kimblad
Director BU Flooring
Technology



Stina Leire
Director Marketing &
Communication



Ola Kronvall
BU & Sales Director
Furniture Technology



Ulf Molén
Director Business
Development



BU Flooring Technology



Laetitia Kimblad
Director BU Flooring
Technology

Business Development



Carl-Filip Sewring
Manager Business
Development
Flooring Technology



Sara Wernberg
Business Developer
Flooring Technology



Cuong Ly
Business Developer
Flooring Technology



Anna Nilsson
Business Developer
Flooring Technology



Lynn Johansson
Business Developer
Flooring Technology



Elenor Lissel
Manager Market Intelligence
and IP Compliance



Dan Bengtsson
Market Intelligence Manager



Suzana Kraft
Market Intelligence Manager



Sales Flooring Technology



Jarl Gunnarsson
Sales Director
Flooring Technology

Europe



Niklas Borgquist
Senior KAM N. Europe



Görkem Erguc
KAM S. Europe

Asia



Magnus Holgesson
Region Manager ASIA



Shuang Hansen
KAM China



Per Plate
Senior KAM China



Andreas Engström
KAM SEA
Managing Director Vietnam



Raja Anandaraj
KAM India & Middle East



Alexander Bucur
KAM ASIA

Americas



Iris Meana Prada
Region Manager Americas



Jim Cook
Business Development
Manager North America

Sales support & business development



Oskar Drakenberg
Global Sales Support &
process coordination



Yan Yao
Global Sales support &
marketing coordination



Emil Granath
Business Development
Coordinator



Arsha Josefsson
Business Development
Coordinator



Välinge

BU & Sales Furniture Technology



Ola Kronvall
BU & Sales Director
Furniture Technology



Mindaugas Zacharenko
KAM Furniture Technology



Jonas Banestig
Global Commercial
Development Manager
Furniture Technology



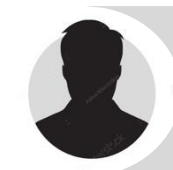
Martin Borg
KAM Furniture Technology



Ola Dexe
KAM Furniture Technology



Johan Hallin
KAM Furniture Technology



Clay Bennett
Business Development
Manager North America



Business Development



Ulf Molén
Director Business
Development



Esther Brännström
Business Developer



Marketing



Stina Leire
Director Marketing &
Communication

SLA-service
from Bjelin



Hanna Harkell
Project Manager



Linn Grundsten
Project Manager Events



Klas Eriksson
Art Director



Sarah Törnqvist
Copywriter



Sofia Wahlman
Event Coordinator &
Internal Communicator



Johan Ebbinger
Graphic Designer



Välinge

Innovation & Technology



Nidas Håkansson
CEO &
Interim CTO
Chief Technology Officer



Hans Brännström
Director R&D Locking and
Industrialization



Per Josefsson
Director R&D Plastic Floor
Technology



Göran Ziegler
Director R&D Surface
Technology



Locking Development & Industrialization



Hans Brännström
Director R&D Locking
Development and
Industrialization



Peter Derelöv
Manager Furniture
Development



Caroline Landgård
Manager Floor Locking
Development



Fredrik Söderberg
Manager Profiling &
Prototypes



Richard Jolfson
Manager Machinery



Furniture Development



Peter Derelöv
Manager Furniture
Development

Project Management



Christian Boo
Project Manager



Thomas Meijer
Project Manager



Marko Sostar
Project Manager



Håkan Johansson
Project Manager



Henrik Lindquist
Project Manager



Oscar Rydsjö
Project Manager



Floor Locking Development



Caroline Landgård
Manager Floor Locking
Development

Project Management



Lucas Larsson
Project Manager



Anders Nilsson
Project Manager



Thai Tran
Project Manager



Karl Quist
Project Manager



Robin Mellby
Project Manager



Mattias Lundberg
Project Manager



Profiling & Prototypes



Fredrik Söderberg
Manager Profiling & Prototypes

Flooring Development



Lina Jakobsson
Profiling Technician



Linus Merup
Profiling Technician



Kristian Tilly
Profiling Technician



Joel Fex
Profiling Technician



Andreas Edman
Profiling Technician



Björn Olofsson
Profiling Technician



Kristina Zhygadlo
Profiling Technician



Robert Hök
Profiling Technician



Albin Olsson
Profiling Technician



Simone Eliasson
Profiling Technician

Furniture Development



Zoran Simunic
Teamleader & CNC Profiling Specialist



André Dahlström
Profiling Technician



Thomas Krätzer
Profiling Technician



Jimmie Bruno
CNC Profiling Specialist



Alexander Jörgensen
Profiling Technician



Jonathan Svensson
Profiling Technician

Samples & Prototypes



Krystian Gutowski
Wood Technician



Per Nilsson
Wood Technician

Metal Workshop



Stefan Stigert
Mechanic



Välinge

Välinge Machinery



Richard Jolfson
Manager Välinge Machinery



Albin Eliasson
Project Manager
Plastics



Rickard Ottosson
Operations Manager



Almir Saran
Automation Engineer



Jonas Andersson
Project Manager



Carl Andersson
Mechanical Engineer



Magnus Öhnström
Mechanical Engineer



Fredrik Boo
Service Technician



Thomas Lindström
Project Manager



Dino Kavaz
Service Technician



R & D Plastic Floor Technology



Per Josefsson
Director R&D Plastic Floor
Technology



**Karl-Magnus
Andersson**
Project Manager



Lillie Wittrup
Project Manager,
Business Development



Pontus Gamstedt
Project Manager



**Jessica Gard
Timmerfors**
Development Engineer



Martin Bjeremyr
Project Manager



R&D Surface Technology



Rickard Rittinge
Deputy Manager R&D
Surface Technology



Göran Ziegler
Director R&D Surface
Technology

Project Management

R & D Hall

R & D Laboratory



Sofia Bergendal
Project Manager



Pär Martinsson
Manager R&D Hall



Peter Scher
Laboratory Manager



Mattias Sjöstrand
Senior Laboratory Engineer



Marina Härd
Project Manager



Henrik Selmqvist
R&D Technician



Thomas Persson
Prototype &
Test Engineer



Per Lundkvist
Lab Technician



Gheorghe Oltenau
Lab Technician



Marcus Stråth
Lab Technician



Daniel Scialanga
Project Manager



Desco Valevid
R&D Technician



Frederik Sand
Senior R&D
Technician



Maria Carlberg
Lab Technician



Kristian Pandurovic
Lab Technician



Marcus Fältström
Lab Technician



Välinge

Välinge China



Magnus Holgesson
Region Manager ASIA



Francis Li Jiwen
Managing Director Välinge
China

VSCC Kunshan



Tommy Tao
VSCC Site Manager/Tech.
Manager



Chris Wang
Operator



Ken Zhao
Logistic & General Support



Wu Tong
Technical Support Engineer
Flooring Technologies



Jason Qin
Technical Support Engineer
Flooring Technologies



Leo Li
Technical Support Engineer
Furniture Technologies



Eunice Yu
Lab Technician



Candy Meng
Customer Service/Trading
Assistant



Johnnie Jiang
Business Development
Manager Flooring
Technologies

Shanghai Office



Vera Yu
Finance/HR Manager



Stuart Lee
Marketing Manager



Nancy Guo
Business Development
Manager Furniture
Technologies



Eriya Yi
Marketing Assistant



Jason Meng
Business Development
Manager Flooring
Technologies



Adriano Zanon
Supply Manager



Välinge

External Consultants



Jarl Gunnarsson
Sales Director
Flooring Technology



Magnus Holgesson
Region Manager ASIA



Ola Kronvall
BU & Sales Director
Furniture Technology

Vietnam



Le Canh Phuc
Business Development
Flooring/Furniture



Nguyen Thanh Nam
Machinery and Technical
Engineer
Flooring/Furniture



Võ Nguyễn Đăng Khoa
Technical Support Engineer
Flooring/Furniture

Korea



JC Trust
(External consultant)
Jason Hong
Business Development
Flooring/Furniture

Japan



Gadelius
(External consultant)
Yasushi Kimura
Business Development
Flooring/Furniture

Dach Region



(External consultant)
Martin Beeh
Business Development
Furniture

Turkey



(External consultant)
Bülent Esen
Business Development
Furniture

South America



(External consultant)
Paulo Tem Pass
Business Development
Furniture

